

Replacing the Inner Lens, Outer Door, and Hinge Parts:

1. Remove the Knob Screws, Threaded Nuts, and Compression Washers.
2. Remove the Cam Covers holding the Outer Door onto the Helmet.
3. Remove the Outer Door and the Inner Lens.
4. Remove the Cams from the Helmet Hinge area.
5. Check the Helmet Hinge area for distorted or broken pieces. If Helmet is not serviceable, then replace Helmet before installing a new Door Maintenance Kit.
6. Install new Cams into the Helmet Hinge area. Note: Each Cam has an arrow molded into the Cam. Arrow should be facing outward from Helmet and pointing up when installed. See Figure 1.
7. Install the new Inner Lens by placing the Top Channel of the Inner Lens into the Helmet Top area, first. Then, snapping in the Bottom Channel of the Inner Lens into the Helmet Bottom area.
8. Install the new Outer Door over the Hinge area of the Helmet. Ensure the Bottom area of the Outer Door is snapped into the Bottom of the Helmet. Note: Hinge parts can be prematurely damaged unless installed properly while the Outer Door is snapped in its proper place on the Helmet.
9. Snap new Cam Covers into place over the Outer Door Hinges. Note: The Cam Cover has three (3) pins that fit into the three (3) holes of the Outer Door Hinges. Check the alignment of pins and holes before snapping into place. Premature damage could occur to the parts if not properly installed. See Figure 2.
10. Install the new Knob Screws, Threaded Nuts, and the Compression Washers through the Hinge area. The Compression Washers are installed over the ends of the Threaded Nuts. The Threaded Nuts have an arrow that points toward the front of the helmet before Knob Screws are installed. See Figure 3. The Knob Screws are hand tightened to ensure the compression washer seals against the inside of the helmet. Note: The sealed compression washers are important to ensure the holes in the helmet are water-tight and can pass the Class E dialectic testing in accordance with the ANSI standards.

Kit Includes:

- Inner Lens (1)
- Outer Door (1)
- Cam (2)
- Cam Cover (2)
- Knob Screw (2)
- Threaded Nut (2)
- Compression Washer (2)

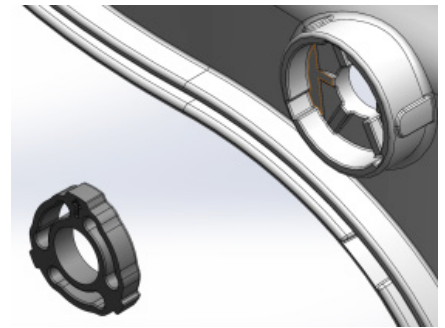


Figure 1

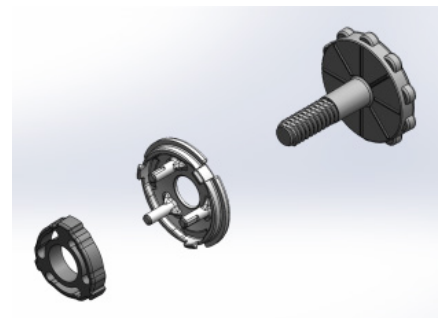


Figure 2

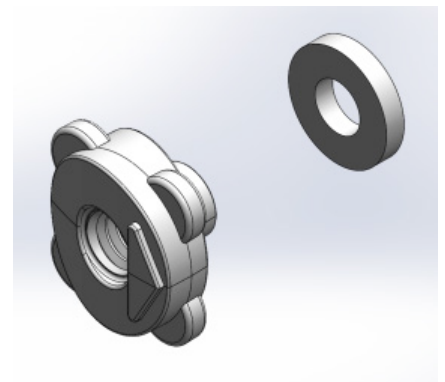


Figure 3

⚠ WARNING

Be sure the snap-in inner lens fits securely in the face opening of the helmet. Use only Bullard replacement lenses. Substituting other lenses voids NIOSH approval. Use of non-Bullard lenses may allow contaminants to enter the respirator and cause death or serious injury or life-threatening delayed lung disease including but not limited to silicosis, pneumoconiosis or asbestosis.



Bullard Center
2421 Fortune Drive
Lexington, KY 40509 • USA
877-BULLARD (285-5273)
Tel: +1-859-234-6616
Fax: +1-859-246-0243

Americas Operations
1898 Safety Way
Cynthiana, KY 41031 • USA
877-BULLARD (285-5273)
Tel: +1-859-234-6616
Fax: +1-859-234-8987

Bullard GmbH
Dieselstrasse 8a
53424 Remagen • Germany
Tel: +49-2642 999980
Fax: +49-2642 9999829

Bullard Asia-Pacific Pte. Ltd.
51 Changi Business Park
Central 2
#03-04 The Signature
Singapore 486066
Tel: +65-6745-0556



ISO 9001
certified

© 2024 Bullard. All rights reserved.

60810010629B (0224)